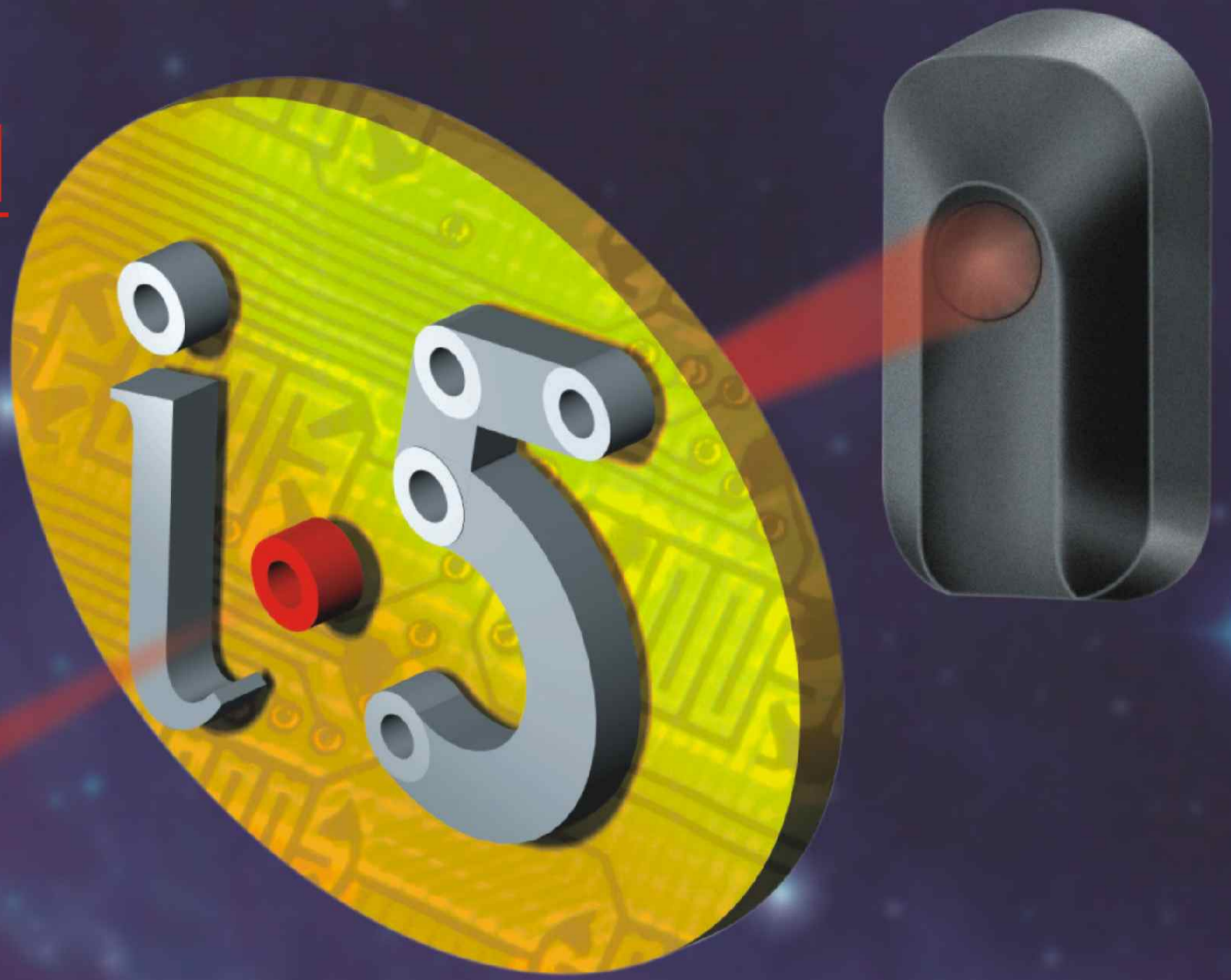


INFRA RED BEAM

The i-5 Infra Red Beam is used primarily as a safety device, to detect the presence of a vehicle or person moving through an entrance



OPERATION

The i-5 Infra Red Beam consists of a transmitter and receiver unit mounted on opposite sides of the entrance. The transmitter sends a modulated infra red beam to the receiver. When the beam is interrupted the receiver changes the state of an internal relay. The contacts of the relay are potential free and can be wired as normally open or closed.

INDICATORS

Both the transmitter and receiver are fitted with a Green LED indicator. The LED in the TX illuminates when the power supply is ON and in the Rx when the beam is aligned.

TECHNICAL SPECIFICATIONS

POWER SUPPLY	12V - 24V DC/AC
POWER CONSUMPTION	Tx - 21mA, Rx - 43Ma @ 12V
MAXIMUM DISTANCE	40m
ALIGNMENT	AUTOMATIC - 9m ² @ 10m #
OUTPUT CONTACT RATING	5A @ 220V AC (non inductive)
OPERATING TEMPERATURE	- 15°C to +55°C
OPERATING HUMIDITY	0% - 90% (non condensing)
DEGREE OF PROTECTION	IP54

Circular area, assuming parallel surfaces.
Rx - Receiver / Tx - Transmitter



1059.D.02.0001_3 i5 Infrared Beam Brochure



CENTURION

THE AUTOMATIC CHOICE

CENTURION SYSTEMS (Pty) Ltd

148 Epsom Avenue, North Riding, Randburg, South Africa
Tel: +27 (011) 699-2400, Fax: +27(011) 704-3412 or 462-6669

BRANCHES:

East Rand, Tel (011) 397-6401
Pretoria, Tel (012) 362-8819/8893
Nelspruit, Tel (013) 752-8074/5
Durban, Tel (031) 701-9583
Cape Town, Tel (021) 447-1295

